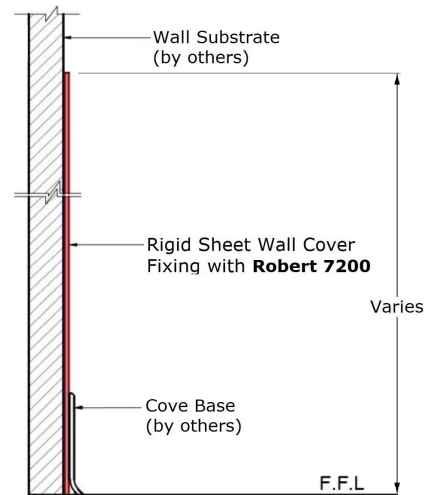


Storage – Store rigid sheet in a clean, dry interior area at temperatures between 50° F (10° -35°). Keep out of direct sunlight. Make sure the sheet is well-supported.

- Store in a clean, dry interior area
- Avoid direct sunlight
- Store between 50° F and 95° F (10° -35° C)

Rolled Sheet – Unroll the sheet material immediately upon receipt and store it in a clean, dry interior area at temperatures between 50° F and 95° F (10° -30° C). Keep out of direct sunlight. If the rolled material does not lay flat, reverse-roll the sheet until it does. Make sure the sheet is well-supported. Keep sheet length to a maximum of 12' (3.6m). When installing a rolled sheet, follow the non-porous installation instructions.

- Unroll the rolled sheet immediately.
- Reverse roll material until it lays completely flat
- Store in a clean, dry interior area
- Avoid direct sunlight
- Store between 50° F and 95° F (10° -35° C)
- Keep sheet length to a maximum of 12' (3.6m)
- For rolled sheets, follow non-porous installation steps.

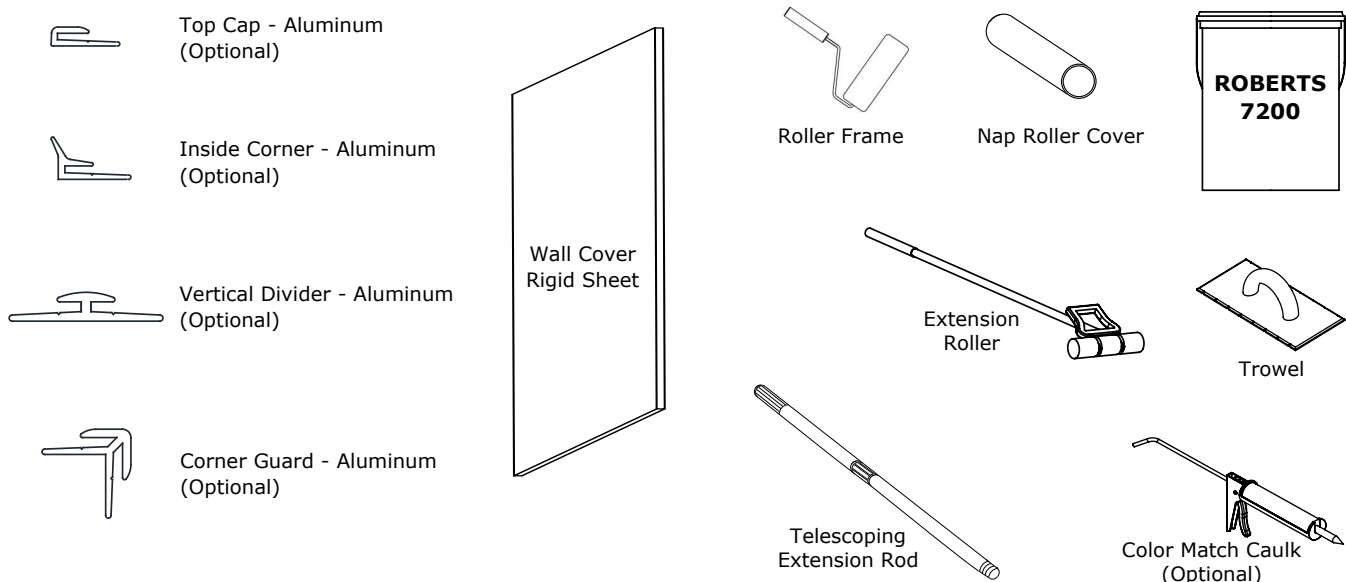


Acclimate – 24 hours before the installation, acclimate the sheet material and adhesive in the environmentally controlled area where it will be installed. This area requires a temperature between 65° F - 80° F (18° -27° C) and a constant humidity level of less than 80% in the installation area 24 hours before installation, during the entire building and 48 hours after the installation.

- Acclimate sheet and adhesives in the environmentally controlled installation area.
- Acclimate sheet and adhesives at temperatures between 65° F - 80° F (18° -27° C).
- Acclimate sheet and adhesives at humidity less than 80%
- Maintain a constant temperature and humidity 24 hours before, during and 48 hours after installation.

Recommended tools

Paint/Primer (if needed), Chalk Line or Laser Level, Level, Trowel, 1/8" (4mm) V-notches with 1/2" (13mm) spacing between notches, Recommended Adhesives ROBERTS 7200, smooth foam paint roller, 1/4" nap paint roll cover, paint roller frame, paint pan, pan liner, Straight Edge, Utility Knife, Painter Tape, Extension Roller, 9" (229mm) wide, Clean cloths, water.



Preparation - Walls must be free from dirt, grease and loose paint. Remove any coatings designed to improve clean up since these coatings may affect adhesion. Glossy surfaces may require sanding or priming to help promote adhesion. Do not install the sheet if the moisture content of the drywall is greater than 4%.

Drywall or plaster – Wall must be smooth, solid, straight and clean. We recommend ROBERTS 7200 Adhesive on primed walls that do not contain polyvinyl acetate (PVAc). Allow primer to dry in accordance with the manufacturer's application instructions.

- Remove Dust and Dirt
- Seal Walls with paint/primer
- If using ROBERTS 7200 Adhesive, DO NOT use paint/primer that contains Polyvinyl Acetate (PVAc).

Painted Drywall or Plaster – If Using ROBERTS 7200 Adhesives, test painted walls for adhesion by applying 12" x 12" (305mm x 305mm) pieces of Rigid Sheet in an inconspicuous area. Allow the test sheet to remain adhered to for 24 hours. Remove the test sheet, if the paint has softened, strip the paint off the wall and reseal with a recommended paint/primer.

- Test the wall to make sure the paint is compatible with the adhesive
- Strip the paint off the wall if adhesive softens the paint after testing

Concrete and Concrete Masonry units – Fill the surface of concrete walls with an appropriate filler to make it smooth. If using ROBERTS 7200 adhesive or primer walls with paint or primer that does not contain Polyvinyl Acetate (PVAc). Allow paint/primer to dry in accordance with the manufacturer's application instructions. Unfilled grout lines may telegraph through the sheet, especially with thinner sheet thickness.

- Fill concrete to make smooth
- Seal the concrete with paint/primer
- If using ROBERTS 7200 Adhesive, DO NOT use paint/primer that contains Polyvinyl Acetate (PVAc).

Non-Porous Substrates – Some non-porous substrates include metal, ceramic tile, high-pressure laminate, epoxy-painted walls, vinyl wall covering (VWC) and rigid sheets. ROBERTS 7200 adhesive can be used to apply rigid sheets to securely adhered vinyl wall covering or rigid sheets and other non-porous substrates. Adhering rigid sheet over existing sheet or VWL will increase smoke generation and flame spread and negate the Class A fire rating. If you choose to do this, follow the non-porous installation instructions.

Cutting and Dry Fitting Sheets - When handling sheet be careful and avoid kinking the sheet. Layout sheet location on the wall marking plumb lines and level lines where needed. When laying out sheet allow a 1/16" (2mm) gap between sheet material and ceilings, floors, corners, door casings, window casings and between sheets. Cut sheet material with a metal straight edge and a sharp utility knife. Cut the sheet using multiple passes-cut openings in the sheet for outlets and other objects located on the wall. Do not install sheet material too close to heat registers, radiators and other equipment that may produce excessive heat. Sheet installation in these areas may cause de-lamination or bubbling of the sheet.

- DO NOT kink the sheet when handling.
- Mark plumb lines and level lines on the wall.
- Allow 1/16" (2mm) between sheet and ceilings, floors, walls, casings and other sheets.
- Use a straight edge and sharp utility knife to cut sheet material.
- Cut the sheet using multiple passes with the utility knife.
- Cut sheet from the non-finish side.
- DO NOT install sheet too close to heat sources.
- Dry fit the sheet to the wall.

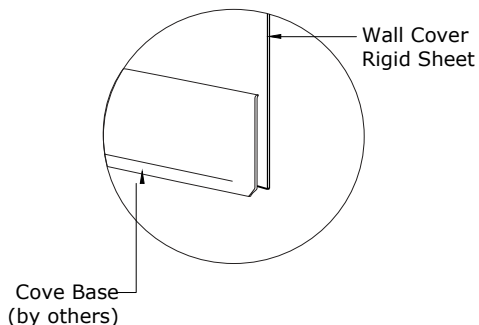
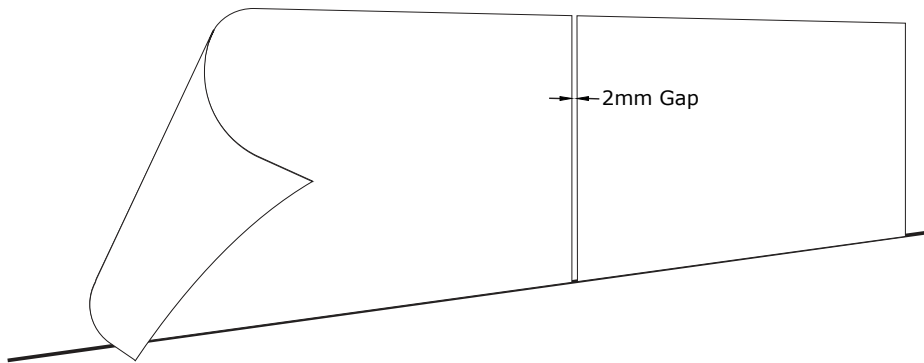
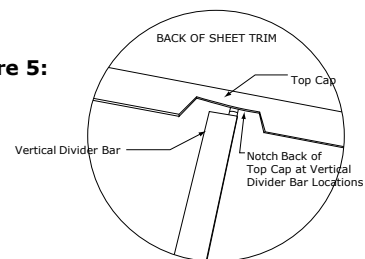
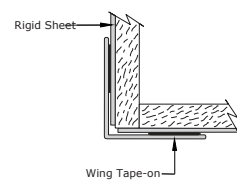
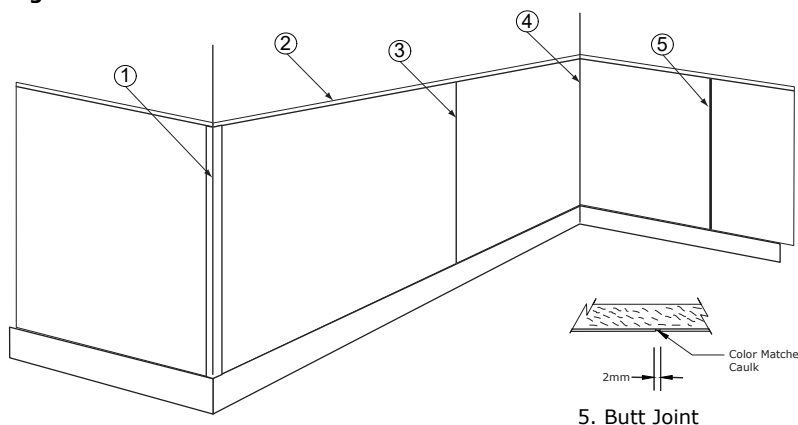


Figure 1:

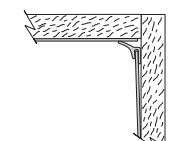
Figure 2:

Figure 3:

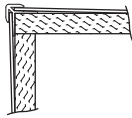

Trim Pieces - If using trim pieces with an ROBERTS 7200 adhesive installation, install the first sheet on the wall. Cut trim pieces with a metal straight edge and a sharp utility knife-slide vertical divider bars or inside corners on the next sheet to be installed. Overlap the edge of the sheet on the wall with the divider bar or inside corner. With aluminum divider bars, slide the sheet into the divider bar. When using top caps and vertical divider bars, notch the back of the top cap where it intersects with the divider bar (see Figure 5). Install the top cap by sliding it on the top edge of the sheet after the sheet is in place. Roll all trim pieces and the entire sheet with an extension roller. Stainless Steel Trim – Cut stainless steel trim with a hack saw or similar. Tape exposed surfaces with painter's tape to help protect it when cutting. (see figure 4)

- Cut trim pieces with a sharp utility knife.
- Overlap the trim piece over the first sheet installed.
- Notch the back of the top cap where it intersects the vertical divider bar.
- Slide the top cap on the edge of the sheet after the sheet is on the wall.
- Roll all trim pieces and the entire sheet with the extension roller.
- Cut stainless steel trim with a hack saw or similar.

Figure 5:

Figure 4:

1. Outside Corner

3. Vertical Divider Bar

2. Top Cap

4. Inside Corner



1. Outside Corner
(Aluminum)



2. Top Cap
(Aluminum)



3. Divider Bar
(Aluminum)



4. Inside Corner
(Aluminum)

Color Matched Caulk - Use Color Matched Caulk to fill in the joints between sheets. Apply masking tape along both edges of the joint. Cut the spout on the tube at a 45° angle. Apply the color-matched caulk to the joint. With a putty knife or finger, remove excess caulk from the joint. Immediately after applying the caulk, remove the painter's tape. If sinking occurs, reapply Color Matched Caulk following the same steps. Remove unwanted caulk before it cures with a water-dampened cloth.

- Apply masking tape on the edges of the joint.
- Repeat caulk application if sinking occurs.
- Apply caulk to the joint and remove excess with a putty knife.
- Remove unwanted caulk before it cures.
- Remove painter's tape before caulk cures.

ROBERTS 7200

Adhesive Application - Apply adhesive only to the wall surface. Do not apply adhesive to the back of the sheet. After the adhesive is applied, it will need to cure before applying the sheet. Application temperature: After following the steps to acclimate the materials, maintain a constant temperature between 65°F and 80°F [18°-27°C] with an indoor humidity level below 80%. Use a 1/8" x 1/8" [4mm x 4mm] V-notched trowel with 1/2" [13mm] spaces between the V-grooves to apply adhesive (see figure 2). Apply adhesive to the entire area where the sheet is to be installed. Remove any excess adhesive from unwanted surfaces with a damp cloth before the adhesive has cured. Cured adhesive is nearly impossible to remove. Do not let adhesive dry in the notches of the trowel. This will change the application rate of the trowel.

- Allow materials to acclimate following the recommendations stated earlier.
- Use a V-notched trowel with 1/8" x 1/8" [4mm x 4mm] V-notches spaced 1/2" [13mm] apart.
- Apply adhesive only on the wall.
- Apply adhesive to the entire wall area where the sheet will be installed.
- Remove any excess adhesive before it has cured.
- Clean the trowel so notches do not get clogged.

Figure 6:



Adhesive Curing, Non-Porous Substrate (follow these steps for rolled sheet)

Some non-porous substrates include metal, ceramic tile, high-pressure laminate, epoxy-painted walls, and vinyl wall covering. When applying adhesives to these substrates, moisture in the adhesive will not be absorbed by the substrate. Longer cure times are required. Allow the adhesive to become 90% translucent. Let the adhesive become tacky and not transfer to your finger when touched. Temperature and humidity levels will affect the time it takes for adhesive to cure. Cure times may range from 1 hour but not more than 3 hours. Fans will increase air movement and reduce cure time. The installer is responsible for determining the cure time of the adhesive based on job site conditions. Do a test installation if needed. Align the sheet perfectly since the longer cure time makes the adhesive behave like contact cement. Readjusting the sheet may be difficult or impossible.

- Allow adhesive to cure longer (at least an hour but not more than three hours)
- Allow the adhesive to become 90% translucent, and let the adhesive become tacky and not transfer to your finger when touched.
- Use fans to reduce cure time.
- The installer is responsible for determining the cure time of the adhesive based on job site conditions.
- Do a test installation if needed.
- Position the sheet perfectly since adhesive behaves like contact cement.

Positioning Sheet

Wipe the back of the sheet to remove any dust. After the adhesive has cured, position the sheet on the wall, aligning the edges with plumb lines or level lines. Hold sheets back from ceiling, floors, corners, casings and other sheets by 1/16" [2mm] to allow for expansion (see figure 2). If needed, reposition the sheet on the wall by carefully pulling it back and re-aligning it to the wall. Use an extension roller to firmly embed the sheet into the adhesive (see figure 3). Apply heavy body pressure to every square inch of the sheet, starting at the center and working to the edges, ensuring it is bonded securely to the wall.

- Wipe the back of the sheet to remove dust.
- Position sheet on the wall.
- Allow 1/16" [2mm] gaps for expansion.
- Reposition the sheet before rolling if needed.
- Roll the entire sheet with an extension roller, starting at the center and working to the edges.

Cleaning

Completion: Immediately upon completion of installation, clean the sheet and remove layout marks, excess adhesive and surface blemishes. Cured adhesive is difficult to remove. Use mineral spirits and rub gently with a soft cloth. After removing adhesive, wipe the area with a general-purpose cleaner like fantastic®. Rinse the area with a water-dampened cloth. Dry with a clean soft cloth.

- Upon Completion, remove layout marks, excess adhesive and surface blemishes.
- Cured Adhesive.
- Use mineral spirits and gently rub.
- Follow by wiping with a cleaner like fantastic®.
- Rinse sheet with water dampened cloth.

Maintenance

For general cleaning, use Antibacterial fantastik® All Purpose Cleaner Heavy Duty. Use a clean, lint-free cloth and wipe clean. For tough stains, like markers, pencil, white marks, and rubber heel marks, the following was shown to be most effective: Do not use any abrasive cleaning cloths or sponges.

- Zep® Heavy Duty Citrus Degreaser
- Clorox® Clean-up with Bleach
- Antibacterial fantastik® All Purpose Cleaner Heavy Duty
 1. Spray products onto sheet and wipe with a dampened cloth.
 2. Repeat process if stain remains. If cleaning product residue remains, rinse with water.

Note: Any reference to a specific branded product does not constitute an endorsement by **PROSPEC**.

After Installation

Maintain environmentally controlled conditions after the installation. Significant temperature changes can cause delamination.

- Maintain environmentally controlled conditions.
- Significant temperature changes can cause delamination.