

KEC Series

Note: Verify that the structural gap is in conformance with submittal data before beginning installation. If this is a Fire Rated Assembly, the first barrier must be installed before the Architectural Joint System. Refer to the fire barrier instructions for specific system installation.

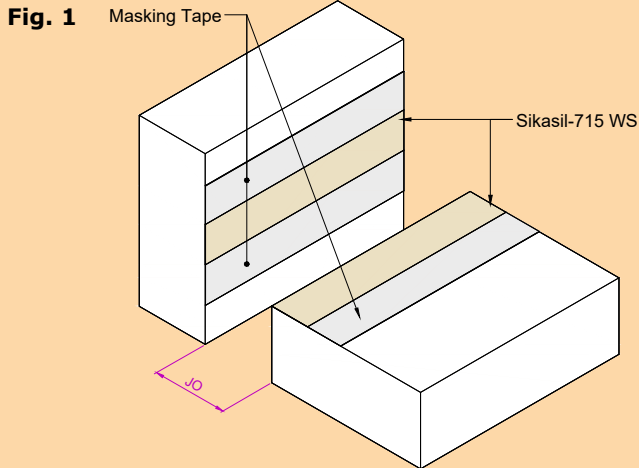


Fig. 2

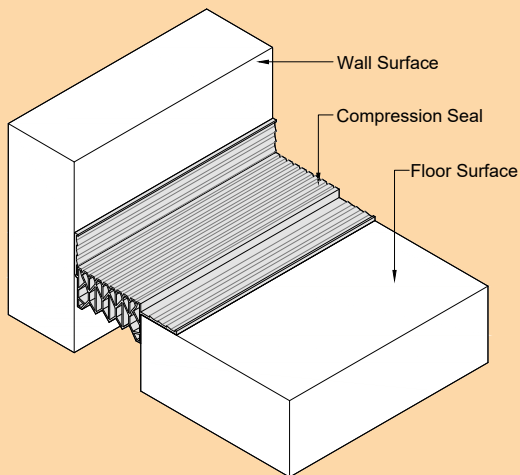
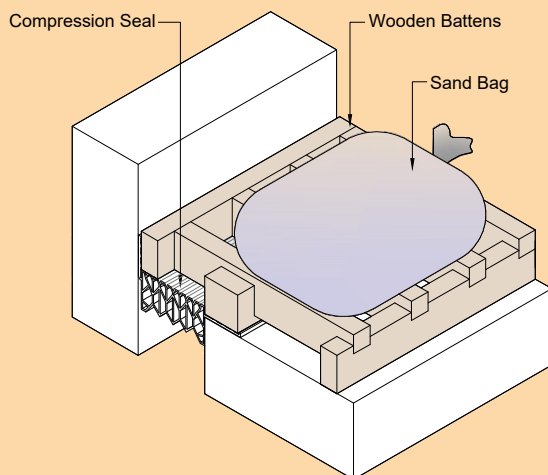


Fig. 3



1. Install the architectural joint system at the finished floor and wall surfaces. Ensure all surfaces are clean and free of dust, debris, and contaminants in the areas designated for adhesive application.

Figure 1

2. Apply masking tape to both substrate surfaces (floor and wall). Then apply Sikasil-715 WS sealant evenly along the joint area.

Figure 2

3. Prior to installing the compression seal, remove all masking from the substrate surfaces, ensuring the area is clean and ready for installation.
4. Insert the compression seal over the joint opening, ensuring the seal flaps are seated squarely on the substrate surfaces of both the floor and wall.

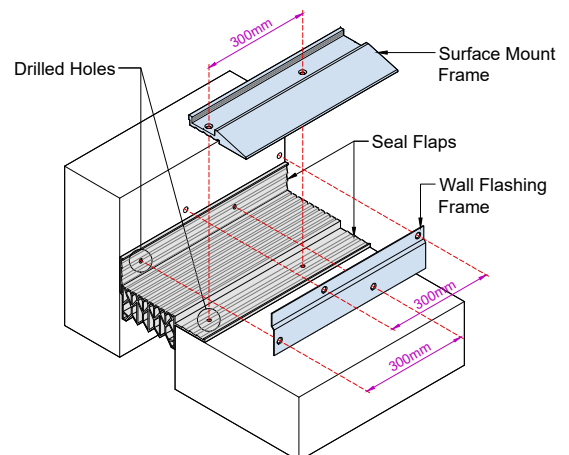
Figure 3

5. Place wooden battens over the seal flaps and position sandbags on top to ensure the flaps remain flat and properly secured during installation.

Figure 4

6. Cut the aluminum frame to the required length. Drill holes in the frame using an appropriate drill bit, keeping a minimum spacing of 300mm center to center and 100mm from each end of the profile.
7. Place the wall flashing and surface mount frame on the installed compression seal flap and mark the hole positions using a marker. Ensure that the wall flashing and surface mount frame are tightly fitted over the seal flaps.
8. Remove the frames and drill holes to a depth of 60mm using a $\varnothing 10$ mm concrete drill bit for the floor and a $\varnothing 8$ mm drill bit for the wall.
9. Clean the area with air compressor after drilling.

Fig. 4



KEC Series

Fig. 5

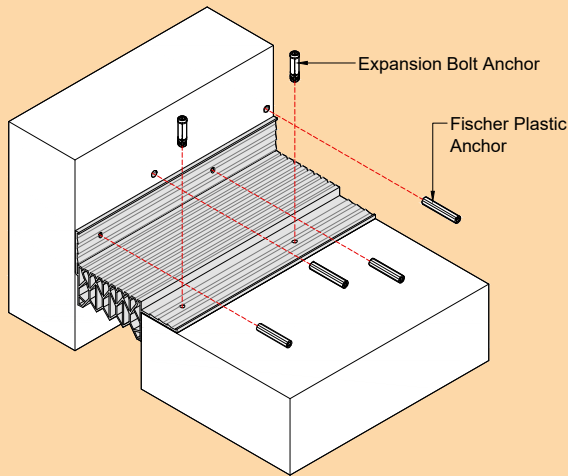


Fig. 6

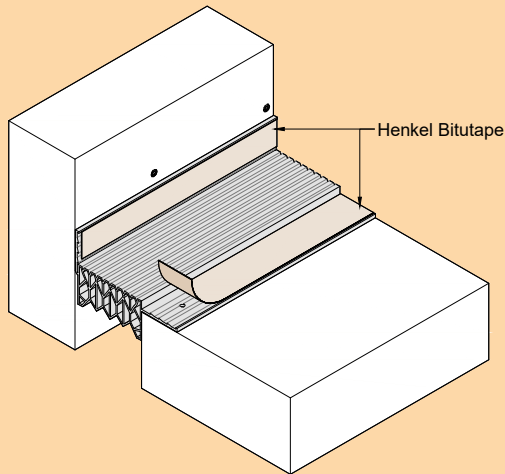


Fig. 7

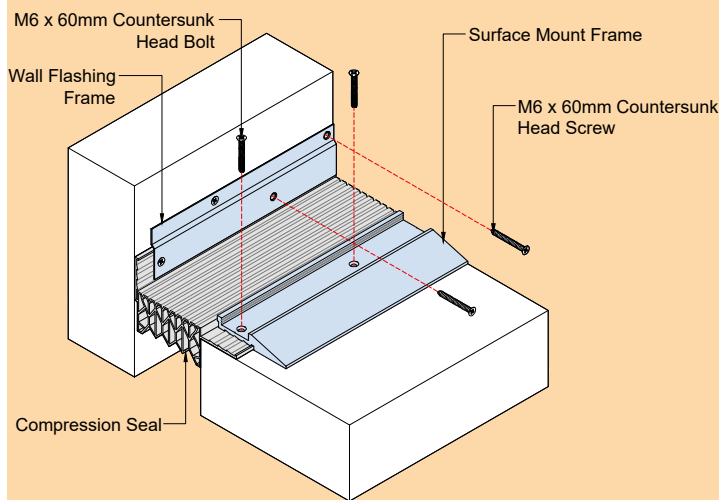


Figure 5

10. Insert an expansion bolt anchor into each drilled hole on the floor substrate using a hammer, ensuring they are properly seated and secure.
11. Insert a fischer plastic anchor into each drilled hole on the wall substrate using a hammer, ensuring they are properly seated and secure.

Figure 6

12. Apply Henkel Bitutape to both sides of the wings, ensuring even and continuous coverage.

Figure 7

13. Position the wall flashing on top of the installed compression seal flap on the wall surface, and secure it in place using M6 × 60mm countersunk head screws in a zigzag pattern.
14. Place the surface mount frame on top of the installed compression seal flap on the floor surface and secure it in place using M6 × 60mm countersunk head bolts.

Figure 8

15. Cover the receptacle of each frame with the EPDM rubber caps, pushing them all the way down so that the clipping part of the rubber is slightly distorted, ensuring a tight and secure fit.

Note: Ensure that the EPDM rubber caps overlap at each butt joint of the aluminum frames. Begin the installation with a small section, for example, a 1-meter-long section, to check fit and alignment before continuing.

16. For completion of the installation, clean all exposed surfaces with a non-solvent cleaner as needed to remove any dust, debris, or residues, ensuring a clean and finished appearance.

Fig. 8

