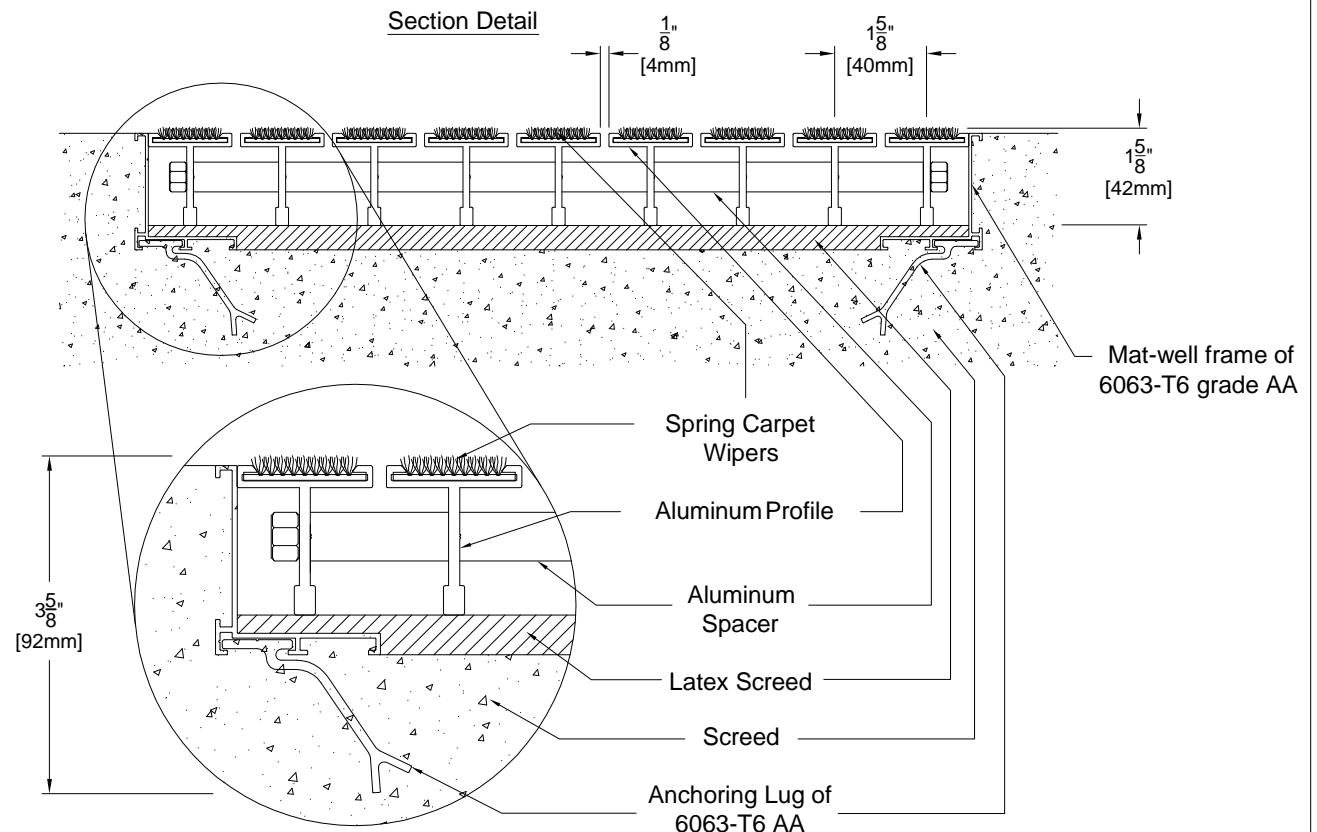
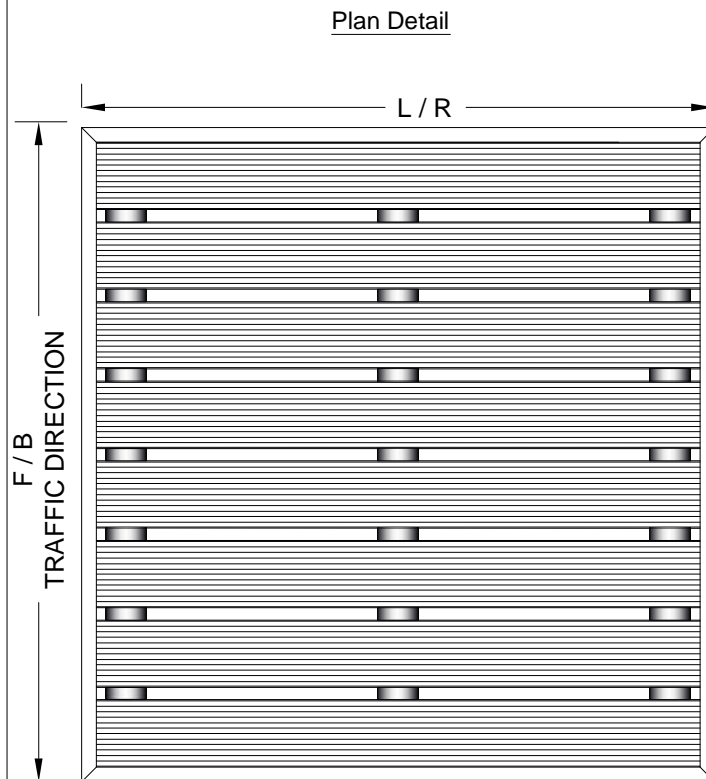



LEVEL BASE FRAME INSTALLATION



DETAIL NOTES:

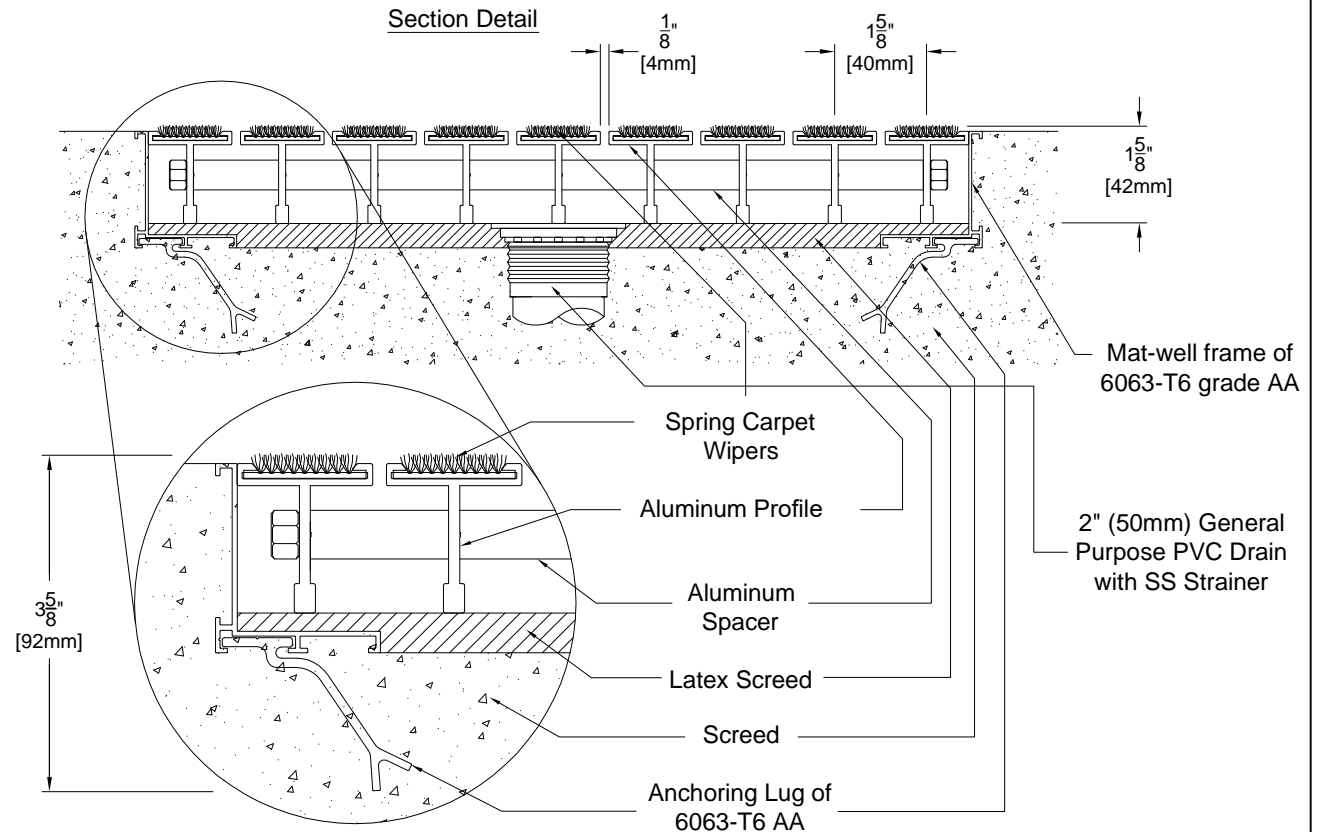
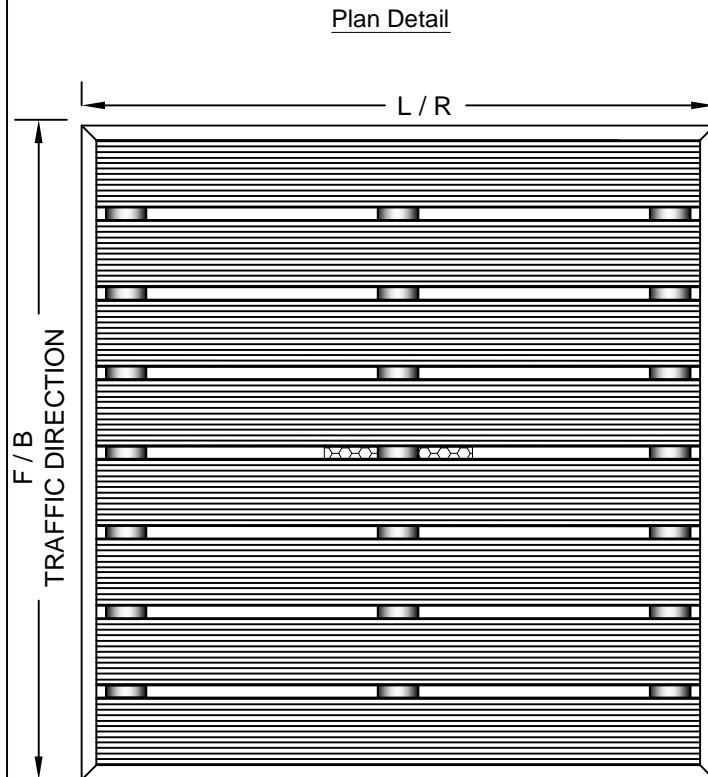
- 1 - Mat Wipers must run perpendicular to traffic direction.
- 2 - Wipers are available in Black colour only. Other colours available on special request.
- 3 - Mat-Well frames available upon request.
- 4 - Installation to be completed in accordance with manufacturer's specifications.
- 5 - All Dimensions are considered true and reflect manufacturer's specifications.
- 6 - Do not scale drawing.
- 7 - Maximum single grid size not to exceed 9.84'(3000mm) left to right X 2'(610mm) front to back.
- 8 - Weight 32 lbs per Square Meter.
- 9 - Max load 1500 lbs per sq. ft.
- 10 - All surfaces in contact with masonry are to receive a coat of Zinc Chromate Premier.
- 11 - Bigger grids be created on site by interconnecting small mats.

PROJECT:		DRAWN BY : SJ	
CONSULTANT:	MATting CODE :	CHECKED BY :	
INTERIOR DESIGN:	OFFER NO:	SCALE : NTS	



26-5250 SATELLITE DRIVE, MISSISSAUGA
ONTARIO L4W 5G5 , CANADA

LEVEL BASE FRAME WITH DRAIN INSTALLATION



DETAIL NOTES:

- 1 - Mat Wipers must run perpendicular to traffic direction.
- 2 - Wipers are available in Black colour only. Other colours available on special request.
- 3 - Mat-Well frames available upon request.
- 4 - Installation to be completed in accordance with manufacturer's specifications.
- 5 - All Dimensions are considered true and reflect manufacturer's specifications.
- 6 - Do not scale drawing.
- 7 - Maximum single grid size not to exceed 9.84'(3000mm) left to right X 2'(610mm) front to back.
- 8 - Weight 32 lbs per Square Meter.
- 9 - Max load 1500 lbs per sq. ft.
- 10 - All surfaces in contact with masonry are to receive a coat of Zinc Chromate Premier.
- 11 - Bigger grids be created on site by interconnecting small mats.

PROJECT:

DRAWN BY : SJ

CONSULTANT:

MATTING CODE :

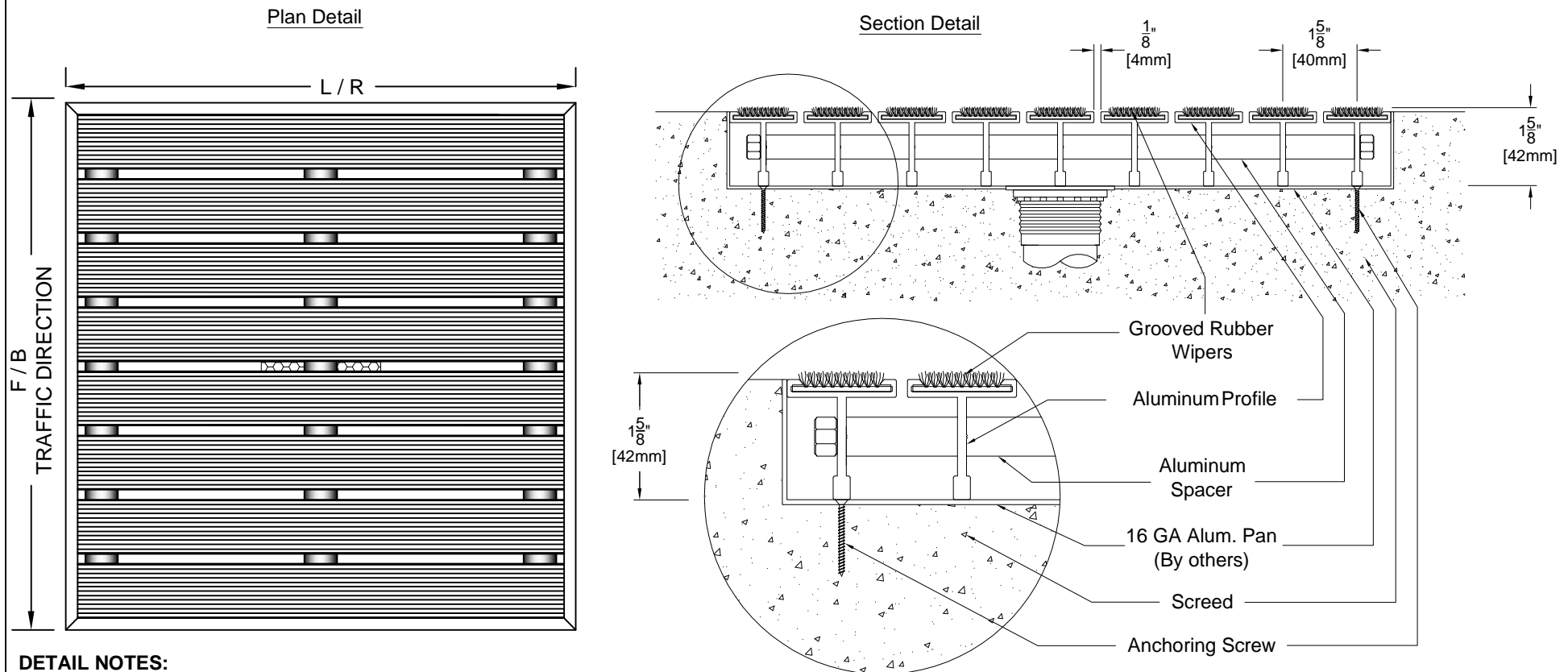
CHECKED BY :

INTERIOR DESIGN:

OFFER NO:

SCALE : NTS

LEVEL BASE FRAME WITH DRAIN AND PAN INSTALLATION



DETAIL NOTES:

- 1 - Mat Wipers must run perpendicular to traffic direction.
- 2 - Wipers are available in Black colour only. Other colours available on special request.
- 3 - Mat-Well frames available upon request.
- 4 - Installation to be completed in accordance with manufacturer's specifications.
- 5 - All Dimensions are considered true and reflect manufacturer's specifications.
- 6 - Do not scale drawing.
- 7 - Maximum single grid size not to exceed 9.84'(3000mm) left to right X 2'(610mm) front to back.
- 8 - Weight 32 lbs per Square Meter.
- 9 - Max load 1500 lbs per sq. ft.
- 10 - All surfaces in contact with masonry are to receive a coat of Zinc Chromate Premier.
- 11 - Bigger grids be created on site by interconnecting small mats.

PROJECT:		DRAWN BY : SJ	
CONSULTANT:	MATting CODE :	CHECKED BY :	
INTERIOR DESIGN:	OFFER NO:	SCALE : NTS	