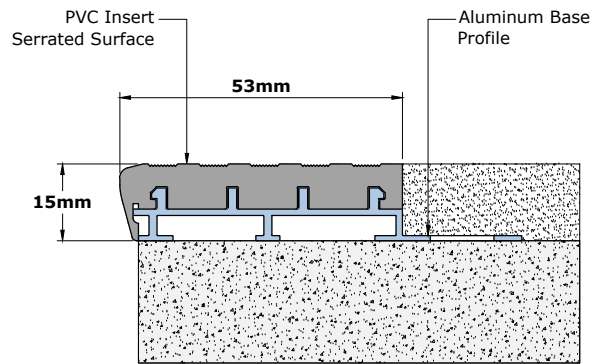
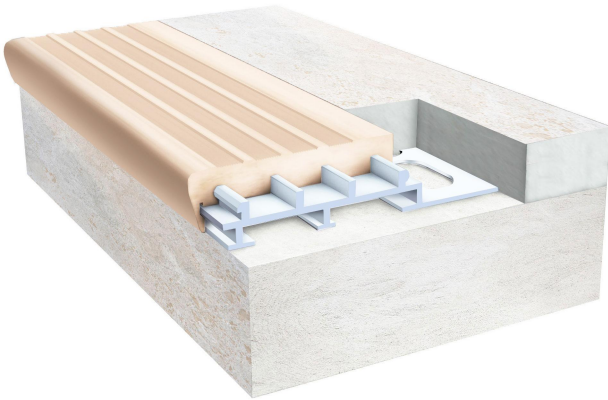


Features

- System designed for indoor application
- Double component nosing
- Easy installation & maintenance
- 53mm Tread area, 15mm Riser
- Standard profile length 3 meters (10')
- Factory cut & drilled option available
- Made of construction grade aluminum alloy 6063 T6
- Suitable for ceramic/porcelain tiles
- Available in 4 standard PVC colours
- Custom colors available, MOQ applies



Team Uniforms & Custom Apparel

Color Options:



BK



GY



BG



WH

Special Note: Customer is encouraged to locally source anchors and construction grade external adhesive for fixing because the local conditions vary from country to country