

Product and Company Identification

Product Name: AA Series

Manufacturer's Name: Prospec Specialties Inc.
26-5250 Satellite Drive, Mississauga
Ontario L4W 5G5, Canada

Emergency #: (888) 749-8465

Table 1: System Details

Application	Code	JO	SH	SW	BO	WH	± Movement (%)		Load (Ton)
		Millimeter					Horizontal	Vertical	
Straight (S)	AAS 025	25	38	25	64	*	25	25	3
	AAS 038	38	38	38	64	*	25	25	3
	AAS 050	50	50	47	64	*	25	25	2
	AAS 075	75	50	73	64	*	25	25	2
Corner (C)	AAC 025	25	38	25	64	40	25	25	3
	AAC 038	38	38	38	64	40	25	25	3
	AAC 050	50	50	47	64	40	25	25	2
	AAC 075	75	50	73	64	40	25	25	2

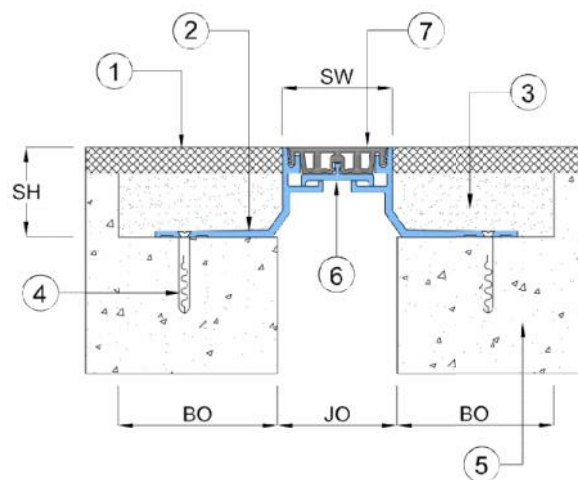
JO = Joint Opening
BO = Block-out (min.)

SH = System Height
WH = Wall Height (approx.)

SW = Sight Width

Key to System Features (Straight Application)

- Floor Finish (by others)
- Continuous Aluminum Recessed frame, Grade 6063-T6
- Backfill (by others)
- Flat Head Concrete Screw (by others)
- Concrete Slab
- Continuous Aluminum Support Plate, Grade 6063-T6 (Applicable in 50mm & 75mm Joint Opening Only)
- Continuous Santoprene Seal



Key to System Features (Corner Application)

1. Floor Finish (by others)
2. Continuous Aluminum
Recessed frame, Grade 6063-T6
3. Backfill (by others)
4. Flat Head Concrete Screw
(by others)
5. Concrete Slab
6. Continuous Aluminum
Support plate, Grade 6063-T6
(Applicable in 50mm & 75mm
Joint Opening Only)
7. Continuous Santoprene Seal
8. Concrete Wall
9. Flat Head Concrete Screw (by others)
10. Continuous Aluminum
Flush wall frame, Grade 6063-T6

