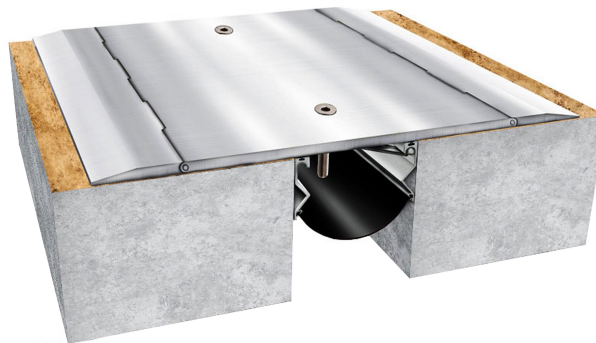


## Features

- System designed for surface mount installation
- Central plate of 304 or 316 grade, Stainless Steel accommodates various floor finishes
- Steel central flanges allows swift shift between positive and negative movements
- EPDM Water Barrier is standard with this system
- System allows full seismic movements
- System allows excellent shear movements
- Load rated for heavy vehicular traffic
- Fire Barriers is optionally available

## Straight Application GIS



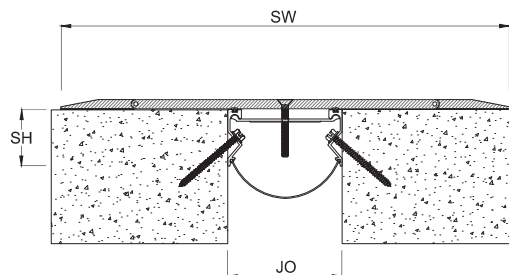
**GI**  
Series

**EXT.**  
Application

**INT.**  
Application

**Seismic**  
Movement

**FLOOR**  
USE



## Details

Usage : Floor

Joint width : 10" - 20"

Optional : Fire Barrier

Application	Code	JO	SH	SW	± Movement (%)			Load (Ton)
		Millimeter			Horizontal	Vertical	Shear	
Straight (S)	GIS 10	254	75	700	50	25	Excellent	Vehicular
	GIS 12	305	75	750	50	25	Excellent	Vehicular
	GIS 16	406	75	850	50	25	Excellent	Vehicular
	GIS 18	457	75	900	50	25	Excellent	Vehicular
	GIS 20	508	75	950	50	25	Excellent	Vehicular

As Prospec Specialties' policy is one of continual progress for the improvement of the company's services to its customers, the company reserves the right to modify the specifications of its products without notice.