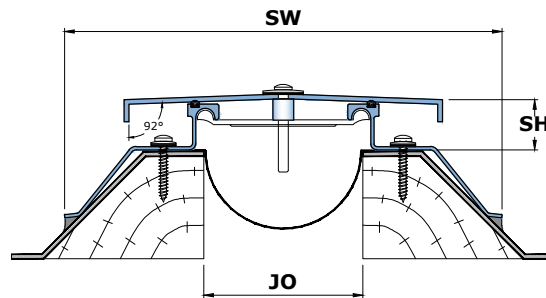
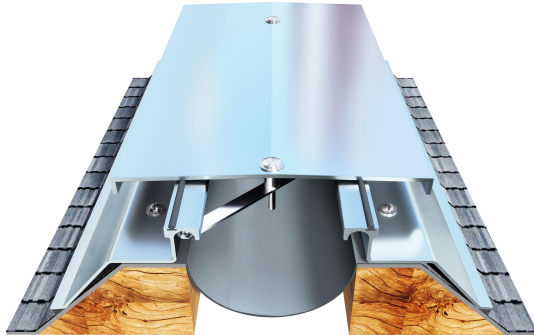


Features

- System designed for surface mount installation
- All aluminum systems are recommended for harsh weather conditions
- The central plate allows swift between positive and negative movements
- Extra-large sizes available
- Suitable for external applications
- System is suitable for full seismic movements
- The Vapor Barrier is standard with this system
- Stainless steel cover plate optionally available

Straight Application DAS



Powder Coat Finish:
Any RALColor



Anodized
Finishes:



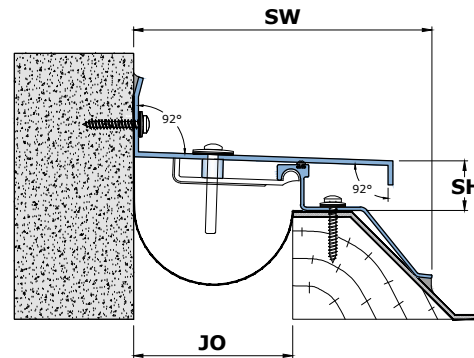
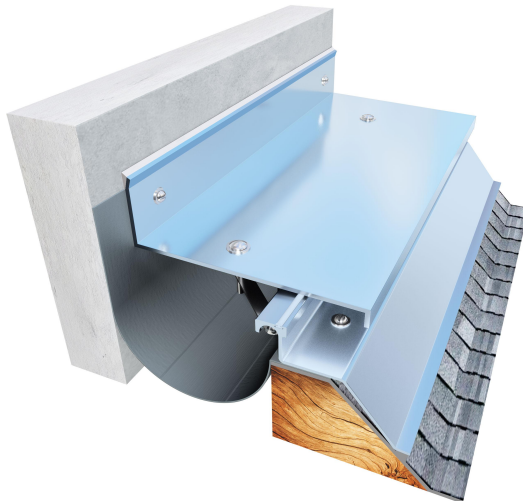
DA
Series

EXT.
Application

Seismic
Movement

Roof
Use

Corner Application DAC



Details

Usage : Roof

Joint Width (mm) : 50 - 300

Optional : Fire Barrier

Wider Joint cover available at request

Application	Code	JO	SH	SW	± Movement (%)			Load (Ton)
		Millimeter			Horizontal	Vertical	Shear	
Straight (S)	DAS 050	50	32	225	50	50	Excellent	*
	DAS 075	75	32	250	50	50	Excellent	*
	DAS 100	100	32	275	50	50	Excellent	*
	DAS 150	150	32	325	50	50	Excellent	*
	DAS 200	200	31	375	50	50	Excellent	*
	DAS 300	300	30	475	50	50	Excellent	*
Corner (C)	DAC 050	50	32	137	25	25	Excellent	*
	DAC 075	75	32	162	25	25	Excellent	*
	DAC 100	100	31	187	25	25	Excellent	*
	DAC 150	150	30	238	25	25	Excellent	*
	DAC 200	200	29	313	25	25	Excellent	*
	DAC 300	300	28	463	25	25	Excellent	*