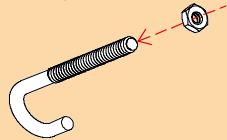


FF Series

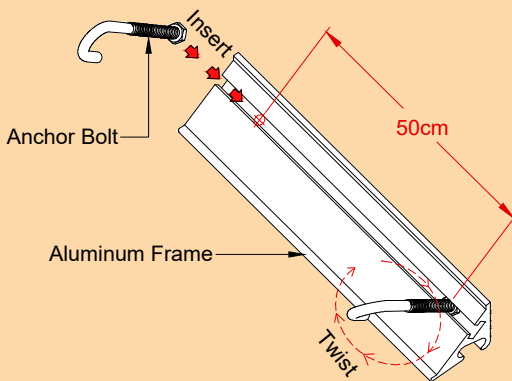
Note: Verify that the structural gap is in conformance with submittal data before beginning installation. If this is a Fire Rated Assembly, the first barrier must be installed before the Architectural Joint System. Refer to the fire barrier instructions for specific system installation.

Fig. 1

A. Anchor Bolt ("J" Type)



B. Aluminum with Anchor Bolt Assembly



C. EPDM/Neoprene Seal

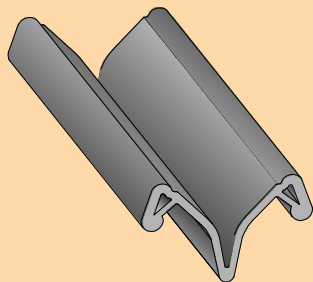
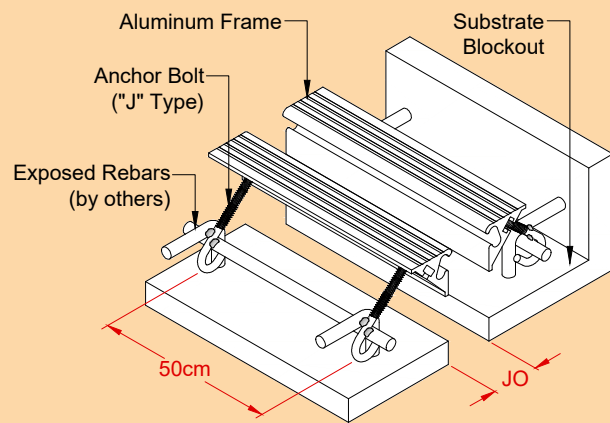


Fig. 2



PROSPEC SPECIALTIES INC. 3601 HIGHWAY 7,
SUITE 400, MARKHAM ON L3R 0M3 CANADA

1. Install the architectural joint system on level finished road/bridge surfaces within the blockout.

Figure 1

2. Cut the aluminum components to length as needed.

3. Assemble the aluminum frame with the anchor bolts ("J" type). Insert each anchor bolt to the bottom channel of aluminum frames with the spacing of 50cm o.c. and twist to tighten each anchor bolt in place (see illustration B).

Figure 2

4. Position and cast the frame with set-in anchor bolts assembly to the exposed rebar in the substrate blockout. Align inside vertical face of aluminum frames to the structural gap opening and level, ensuring that the top of frame matches the finished road/bridge level. Secure the frame in place with tie wire.

Figure 3

5. Insert with Styrofoam temporarily at the structural gap to block the opening from the bottom of both frames to substrate prior to placement of mortar in the blockout, ensuring the mortar does not slip out.

6. Pour or scrape the mixed Pro-Mortar Elastomeric Concrete Header into the blockout area up to the top finished road/bridge surfaces level.

Fig. 3

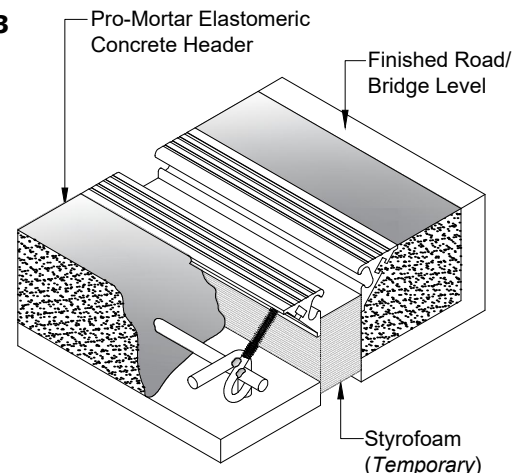


Fig. 4

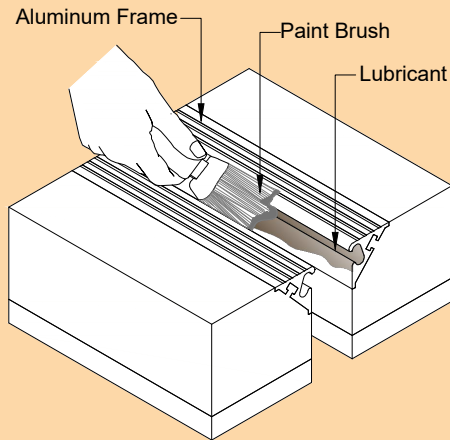


Fig. 5

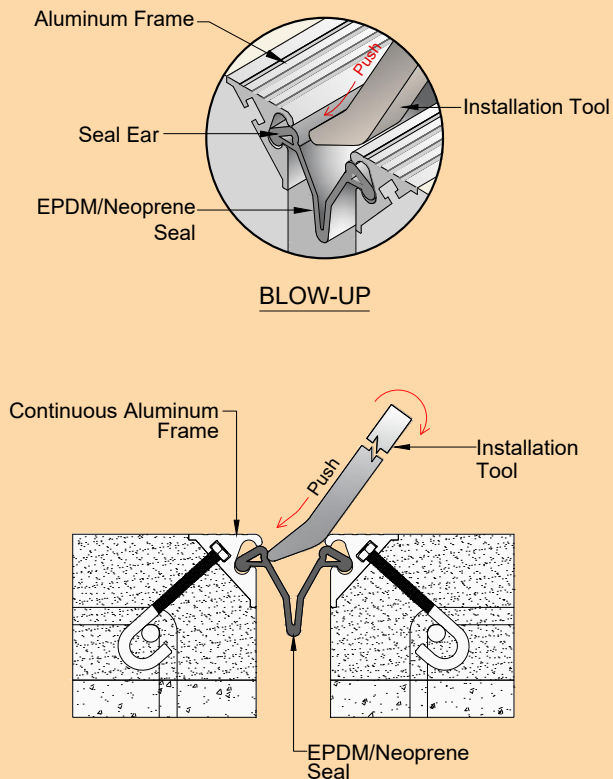


Figure 4

7. Prior to the installation of EPDM/Neoprene seal, clean the frame slots and remove the temporary blocking in the structural gap to ensure the proper fit of the seal. Apply lubricant at all slots of the frame using paint brush.

Figure 5

8. Position the EPDM/Neoprene seal in continuous lengths spanning the entire roadway width into the installed frames and use blunt tools with rounded edges to push lock-in the seal ear in each slot of frame (see illustration). Note: Do not use any sharp tools that can damage the seal. Remove excess lubricant.

Figure 6

9. For completion of installation, clean the exposed surfaces with non-solvent cleaner as required.

Fig. 6: Sytem Installation Completed

