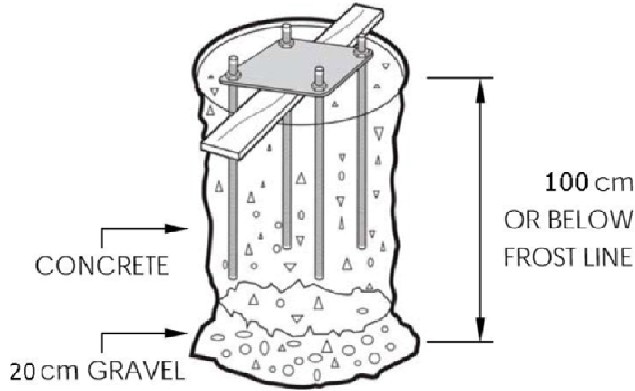




Flagpoles

FOUNDATION INSTALLATION INSTRUCTIONS

1. FOUNDATION



HOLE PREPARATIONS

1. Dig hole according to chart recommendation. If the ground is soft or sandy, increase the diameter of the hole.
2. Fill the bottom 20cm of hole with crushed stone.

HOLE DIMENSIONS

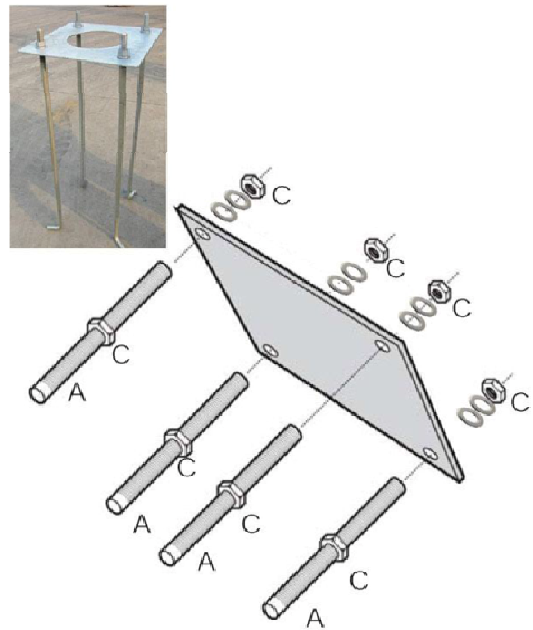


FLAGPOLE	6m	8m	10m	12m	14m	16m	18m	20m
Dimension(cm)	80	80	100	110	110	110	110	110
Depth (cm)	100	100	120	130	150	150	150	150

** Recommended dimensions for normal ground conditions.*

ASSEMBLING GROUND SET

1. Secure lower plate to anchor bolts (A) By first threading down bottom hinge nuts (C). placing over lower plate and securing top washer and hinge nuts.
2. Once both elements are complete, fill The hole with concrete. When inserting Ground set, make sure hinge bolt are In a position to allow for raising and lowering clear of obstruction.
3. Press ground assembly into centre of hole. Keep lowering base plate above concrete with the assistance of wooden plank using a spirit level.



2. FOUNDATION

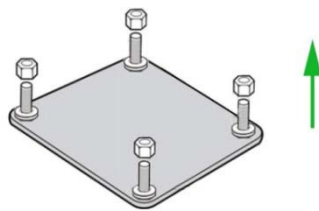


Note: Use adhesive tape to protect thread

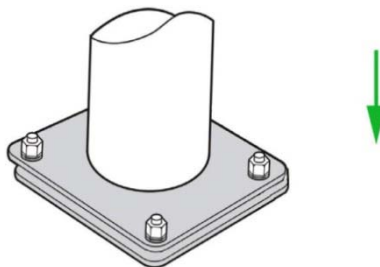


3. RAISING THE FLAGPOLE

- A. When the concrete is firmly set, the flagpole can be raised. Unscrew the washer and nut on the lower plate.



- B. Raise the flagpole with the crane hoist joining lower base and lighting pole base together. Place washers and nuts.



4. DECORATION PLATFORM

Please install the decoration platform according to the following

