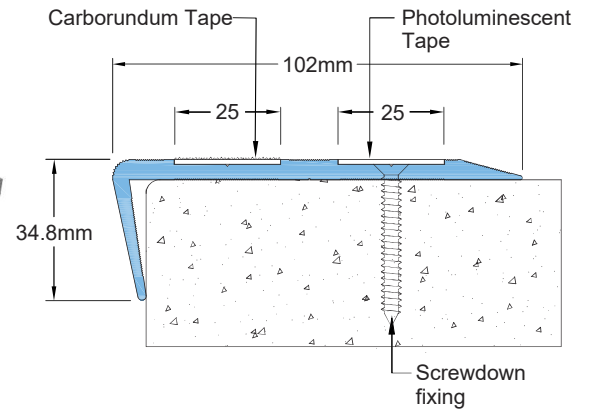
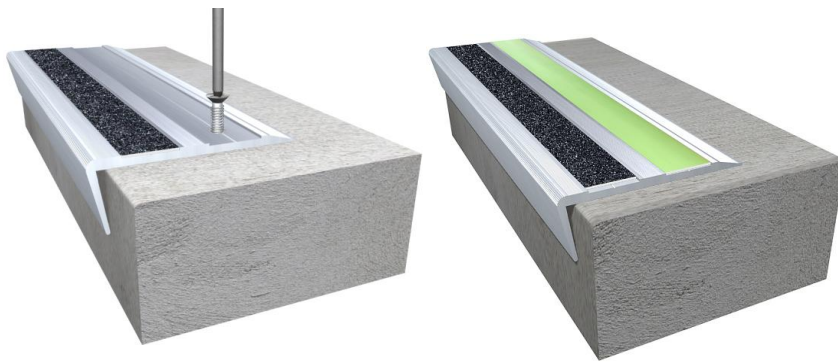


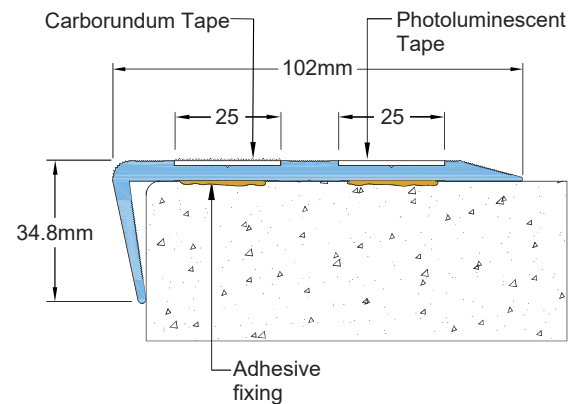
**Features**

- System designed for indoor / outdoor application
- Triple component nosing
- Heavy nosing design and wider nosing footprint makes this product most desirable for medium to heavy duty applications
- 1" (25mm) wide non-slip carborundum self-adhesive tape plus 1" (25mm) wide photo-luminescent tape installed for visibility in dark and rapid response
- Retrofit design for easy installation
- Easy installation & maintenance
- 4" (102mm) tread area
- 1-9/25" (34.8mm) riser area
- Standard profile length 10'(3 meters)
- Factory cut & drilled option available
- Suitable for dry / wet anchoring
- Made of construction grade aluminum alloy 6063 T6

**SNF 04 Screwdown Fixing**



**SNF 04 Adhesive Fixing**



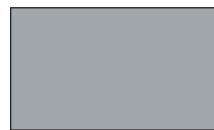
**Color Options:**



MILL FINISH



SILVER ANODIZED



TITANIUM FINISH



BRONZE FINISH

Special Note: Customer is encouraged to locally source anchors and construction grade external adhesive for fixing because the local conditions vary from country to country