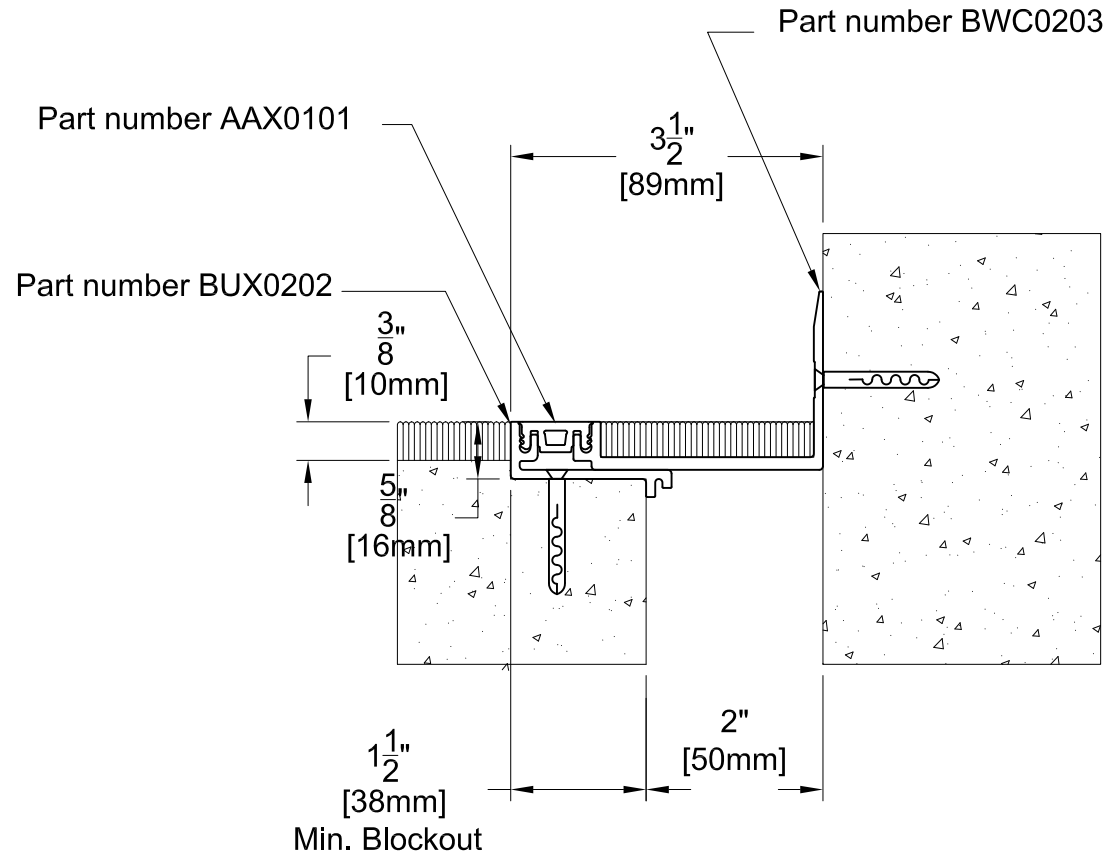


# BWC02 SYSTEM



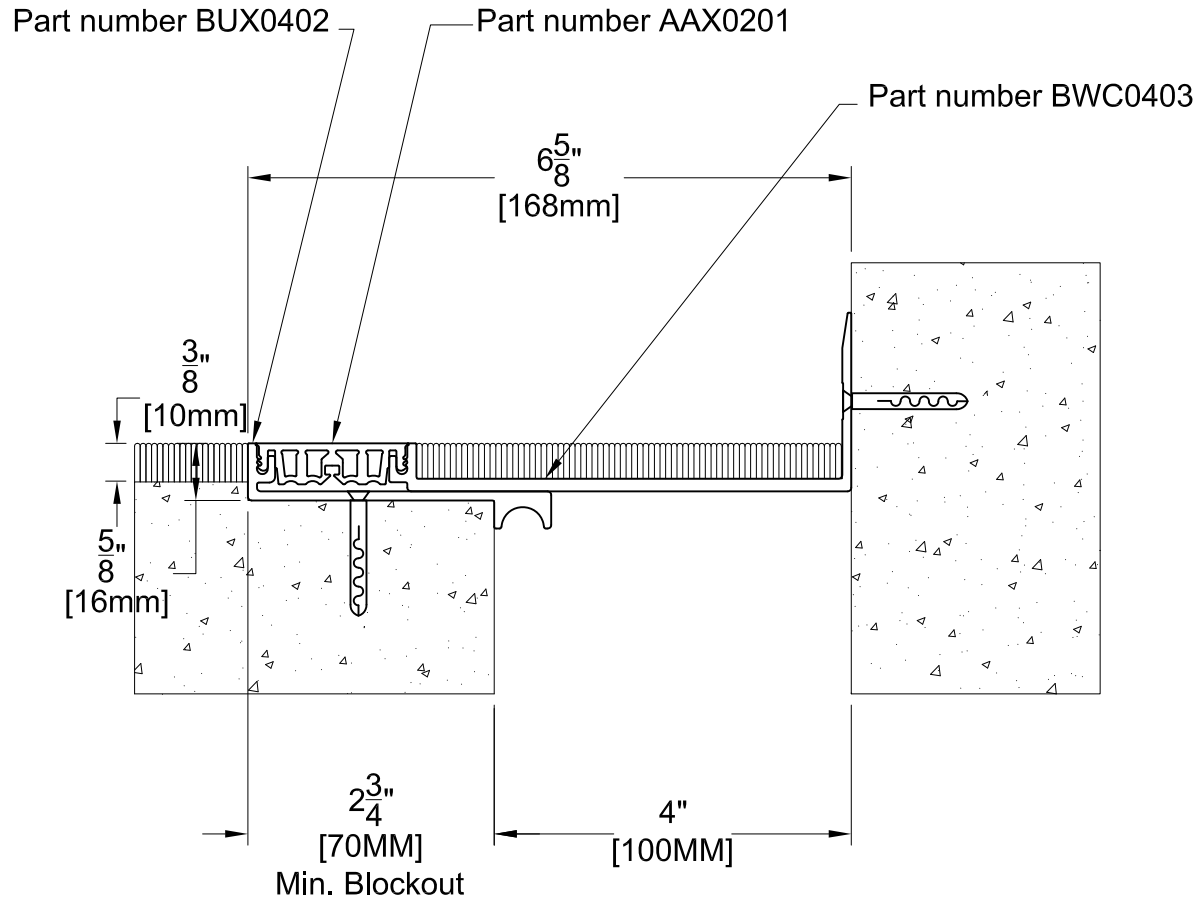
| TECHNICAL DATA          | IMPERIAL (inc) | METRIC (mm) |
|-------------------------|----------------|-------------|
| Joint Width             | 2"             | 51          |
| Movement ± (Horizontal) | 1/4"           | 6           |
| Movement ± (Vertical)   | 1/4"           | 6           |
| Load                    | 3 (Tons)       |             |
| Date: Jan., 2012        | Scale: NTS     |             |
| Rev:                    | Drawn by :     |             |

**APPLICATION:** INTERNAL EXPANSION JOINT COVER FOR FLOOR TO WALL



**PROSPEC SPECIALTIES INC.**  
 3601 HIGHWAY 7, SUITE 400  
 MARKHAM ON L3R 0M3, CANADA.  
 TEL: (888) - 749 - 8456,  
 FAX: (888) - 749 - 8455  
 Email: [info@prospecspecialties.com](mailto:info@prospecspecialties.com)  
 Web: [prospecspecialties.com](http://prospecspecialties.com)

# BWC04 SYSTEM



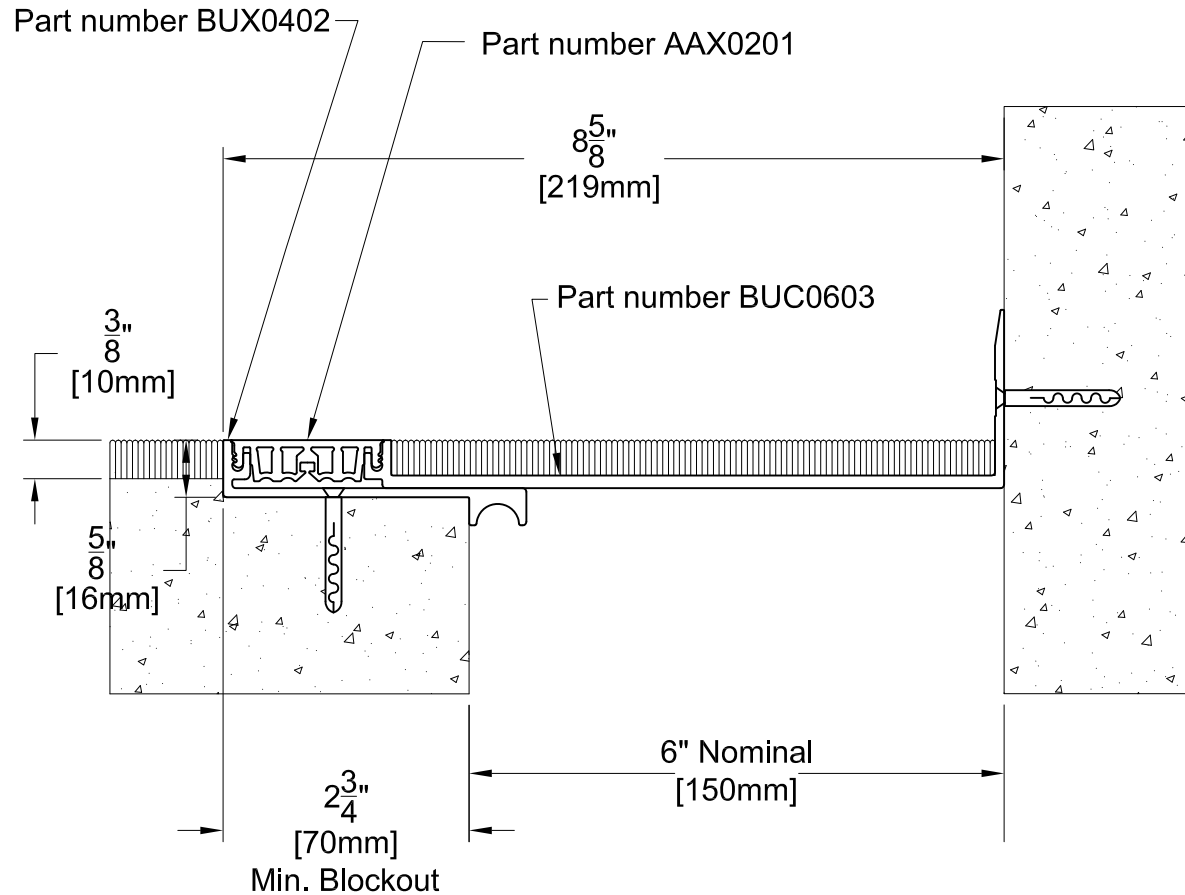
| TECHNICAL DATA          | IMPERIAL (inc) | METRIC (mm) |
|-------------------------|----------------|-------------|
| Joint Width             | 4"             | 102         |
| Movement ± (Horizontal) | 1/2"           | 13          |
| Movement ± (Vertical)   | 1/2"           | 13          |
| Load                    | 2 (Tons)       |             |
| Date: Jan., 2012        | Scale: NTS     |             |
| Rev:                    | Drawn by :     |             |

**APPLICATION:** INTERNAL EXPANSION JOINT COVER FOR FLOOR TO WALL



**PROSPEC SPECIALTIES INC.**  
 3601 HIGHWAY 7, SUITE 400  
 MARKHAM ON L3R 0M3, CANADA.  
 TEL: (888) - 749 - 8456,  
 FAX: (888) - 749 - 8455  
 Email: info@prospecspecialties.com  
 Web: prospecspecialties.com

# BWC06 SYSTEM



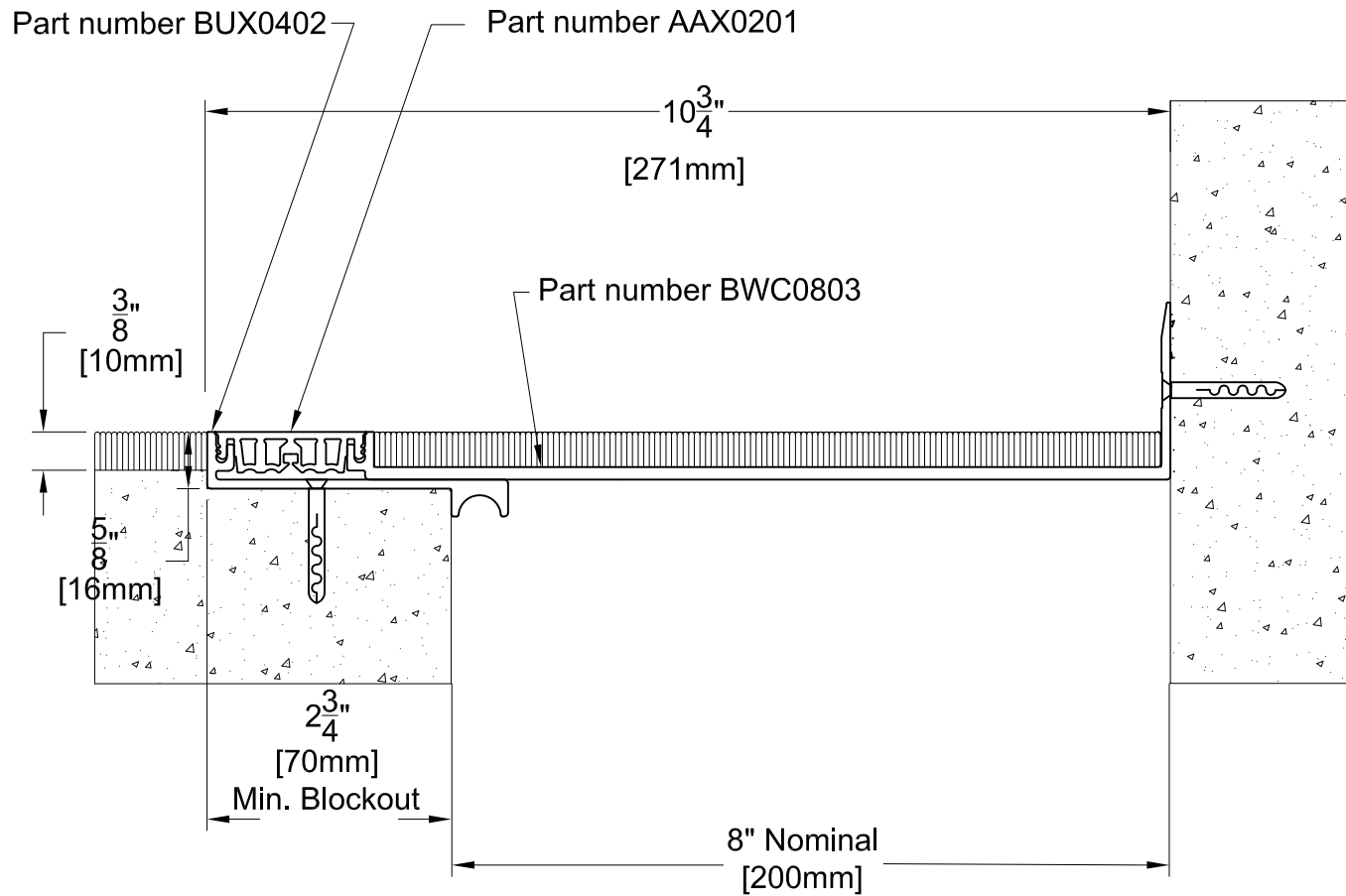
| TECHNICAL DATA          | IMPERIAL (inc) | METRIC (mm) |
|-------------------------|----------------|-------------|
| Joint Width             | 6"             | 150         |
| Movement ± (Horizontal) | 3/4"           | 19          |
| Movement ± (Vertical)   | 3/4"           | 19          |
| Load                    | 1 (Ton)        |             |
| Date: Jan., 2012        | Scale: NTS     |             |
| Rev:                    | Drawn by :     |             |

**APPLICATION:** INTERNAL EXPANSION JOINT COVER FOR FLOOR TO WALL



**PROSPEC SPECIALTIES INC.**  
 3601 HIGHWAY 7, SUITE 400  
 MARKHAM ON L3R 0M3, CANADA.  
 TEL: (888) - 749 - 8456,  
 FAX: (888) - 749 - 8455  
 Email: [info@prospecspecialties.com](mailto:info@prospecspecialties.com)  
 Web: [prospecspecialties.com](http://prospecspecialties.com)

# BWC08 SYSTEM



| TECHNICAL DATA          | IMPERIAL (inc) | METRIC (mm) |
|-------------------------|----------------|-------------|
| Joint Width             | 8"             | 200         |
| Movement ± (Horizontal) | 1"             | 25          |
| Movement ± (Vertical)   | 1"             | 25          |
| Load                    | 1 (Ton)        |             |
| Date: Jan., 2012        | Scale: NTS     |             |
| Rev:                    | Drawn by :     |             |

**APPLICATION:** INTERNAL EXPANSION JOINT COVER FOR FLOOR TO WALL



**PROSPEC SPECIALTIES INC.**  
 3601 HIGHWAY 7, SUITE 400  
 MARKHAM ON L3R 0M3, CANADA.  
 TEL: (888) - 749 - 8456,  
 FAX: (888) - 749 - 8455  
 Email: [info@prospecspecialties.com](mailto:info@prospecspecialties.com)  
 Web: [prospecspecialties.com](http://prospecspecialties.com)